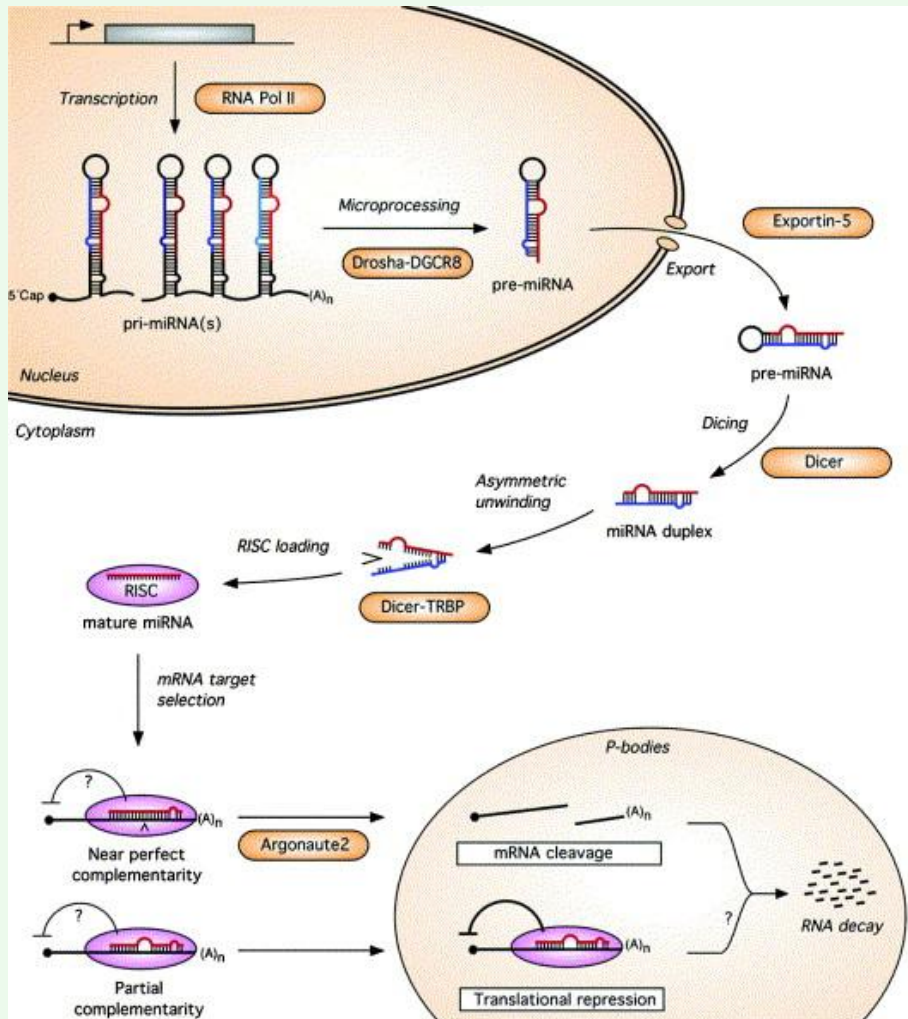


Integrated analysis of miRNA and mRNA expression profiling as a tool to identify prognostic markers and associated pathways

Buffa FM et al. WIMM and WTCHG, University of Oxford

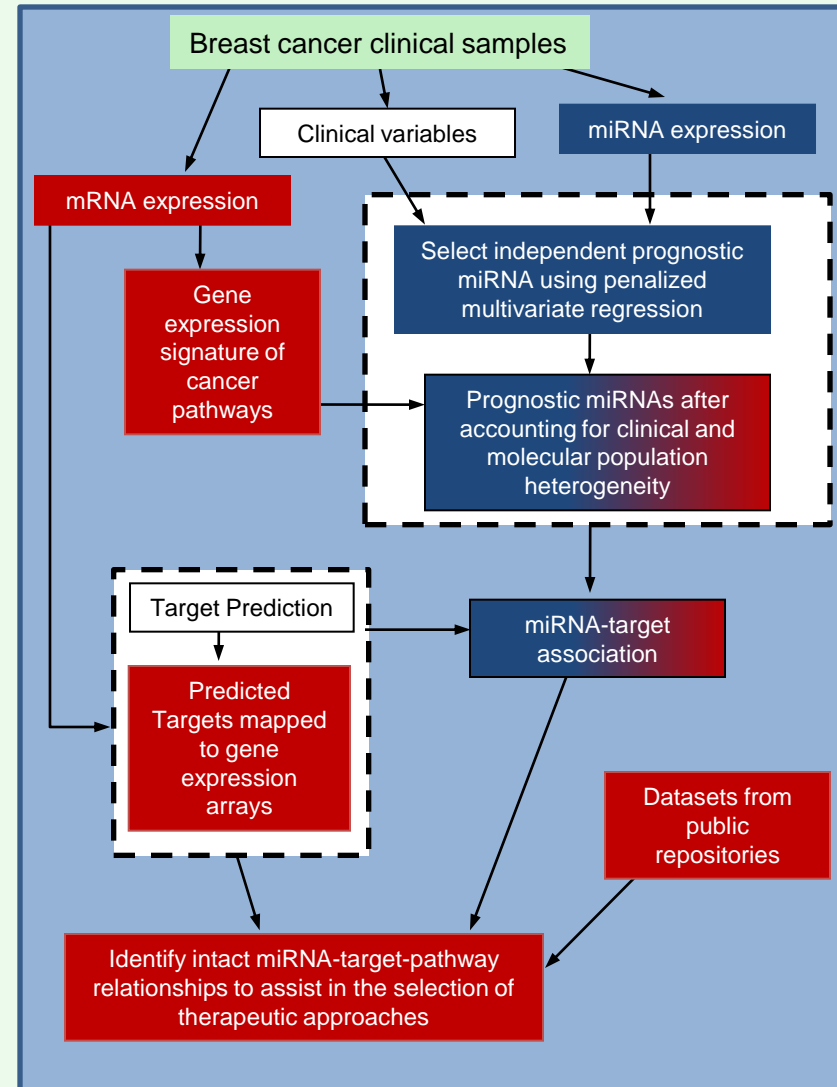
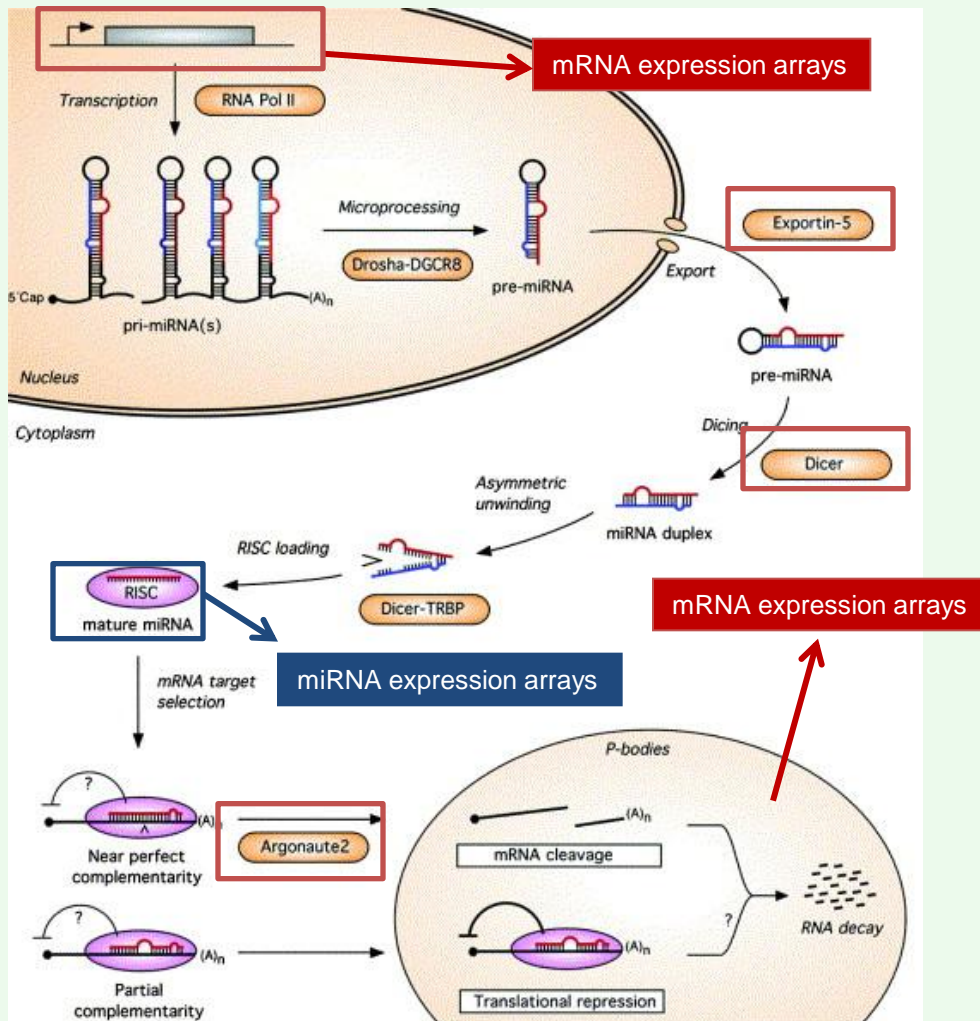
POSTER PB14



Integrated analysis of miRNA and mRNA expression profiling as a tool to identify prognostic markers and associated pathways

Buffa FM et al. WIMM and WTCHG, University of Oxford

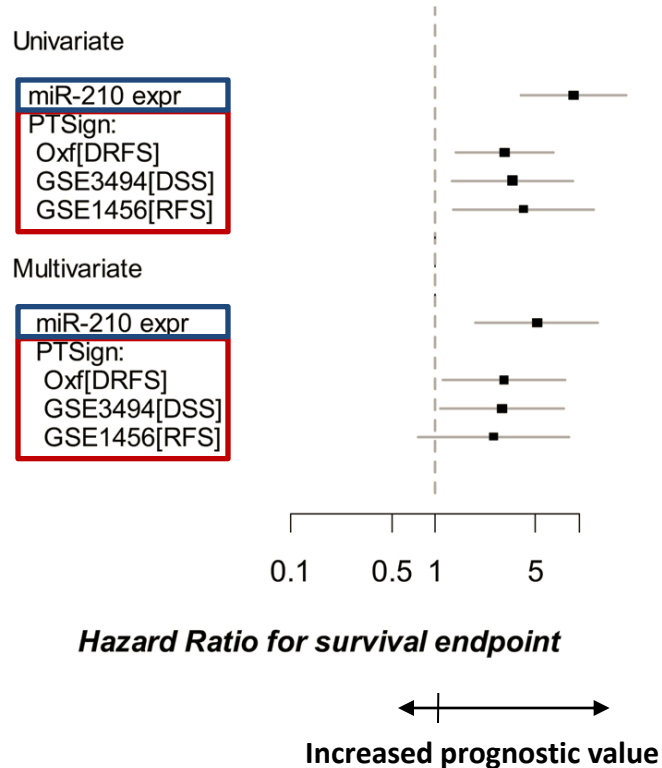
POSTER PB14



Intact miRNA-target-pathway relationships assist in the selection of therapeutic approaches.

The example of miR-210.

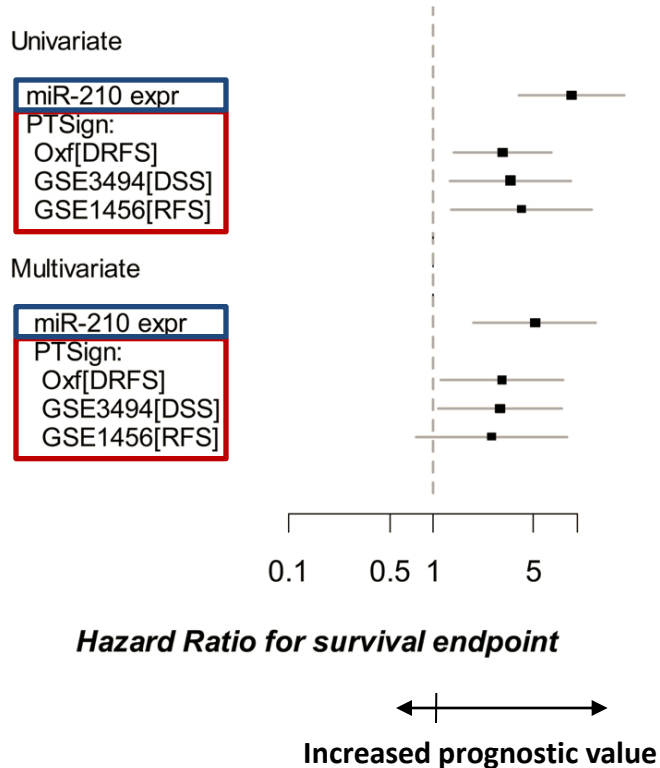
miR-210, its host gene and its **predicted target signature** are associated with hypoxia and prognostic factors in breast cancer



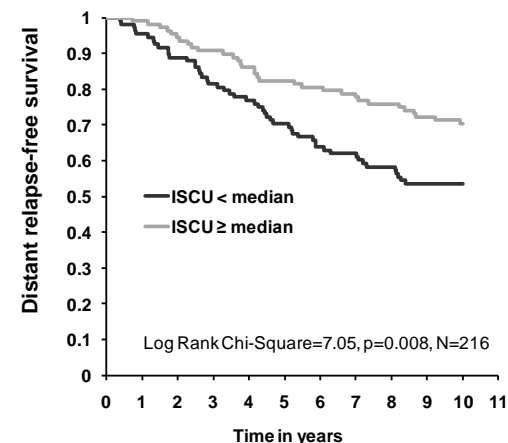
Intact miRNA-target-pathway relationships assist in the selection of therapeutic approaches.

The example of miR-210.

miR-210, its host gene and its **predicted target signature** are associated with hypoxia and prognostic factors in breast cancer



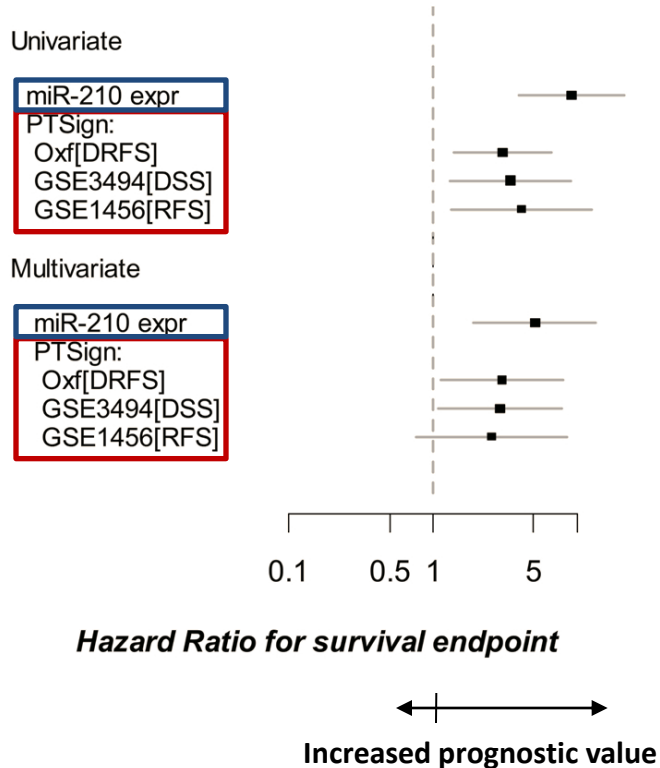
ISCU is associated with miR-210 expression, hypoxia and prognosis in BC



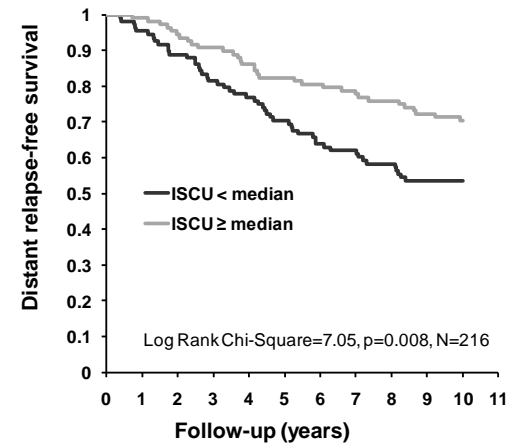
Intact miRNA-target-pathway relationships assist in the selection of therapeutic approaches.

The example of miR-210.

miR-210, its host gene and its **predicted target signature** are associated with hypoxia and prognostic factors in breast cancer



ISCU is associated with miR-210 expression, hypoxia and prognosis in BC



miR-210 via ISCU modulates key metabolic functions that influence cellular adaptation to hypoxia

