



SNC'15

SiNAPSA Neuroscience Conference '15

Ljubljana, Slovenia, May 15-17, 2015

METABOLIC BIOMARKERS IN PATIENTS WITH MCI and PD

Petra Tomše

Department of Nuclear Medicine
University Medical Centre Ljubljana

We studied

- Metabolic brain changes in patients with: MCI, PD, PD-MCI
- Expression of specific metabolic brain networks for Alzheimer's disease (ADRP) and Parkinson's disease (PDRP)
- Correlation of metabolic brain characteristics (ADRP) and CSF biomarkers for AD in individual subjects

Participants

	MCI	MCI a	MCI na
N	20	12	8
Age [yrs]	70 ± 8	68 ± 9	73 ± 5
MMSE	28 ± 2	28 ± 1	28 ± 2
MOCA	24 ± 3	22 ± 4	24 ± 3

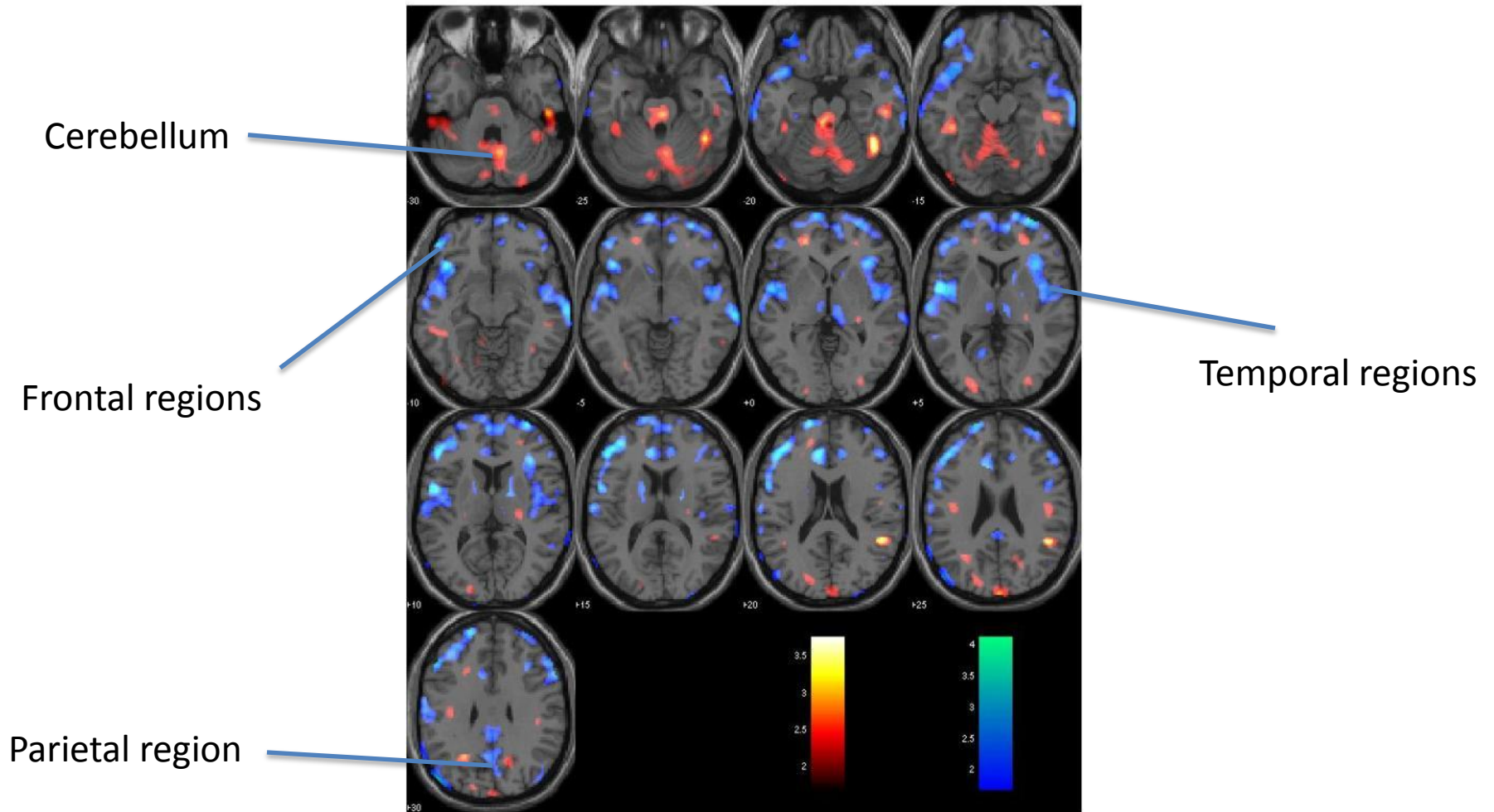
	PD	PD-MCI	Controls
N	15	15	21
Age [yrs]	67 ± 6	71 ± 8	67 ± 7
Parkinson's disease duration [yrs]	3 ± 2	5 ± 3	
MMSE	29 ± 1	29 ± 1	29 ± 1
MOCA	28 ± 2	25 ± 3	27 ± 2

METABOLIC BRAIN CHANGES

Studied with brain FDG/PET

Analysed with Statistical Parametric Mapping (spm8),
at $p=0.05$ level

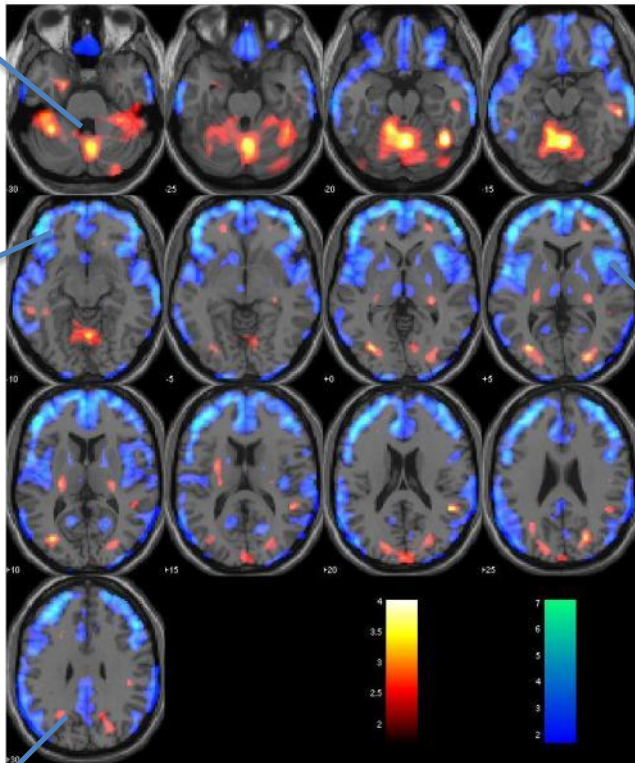
MCI



MCIIna

MCIa

Cerebellum

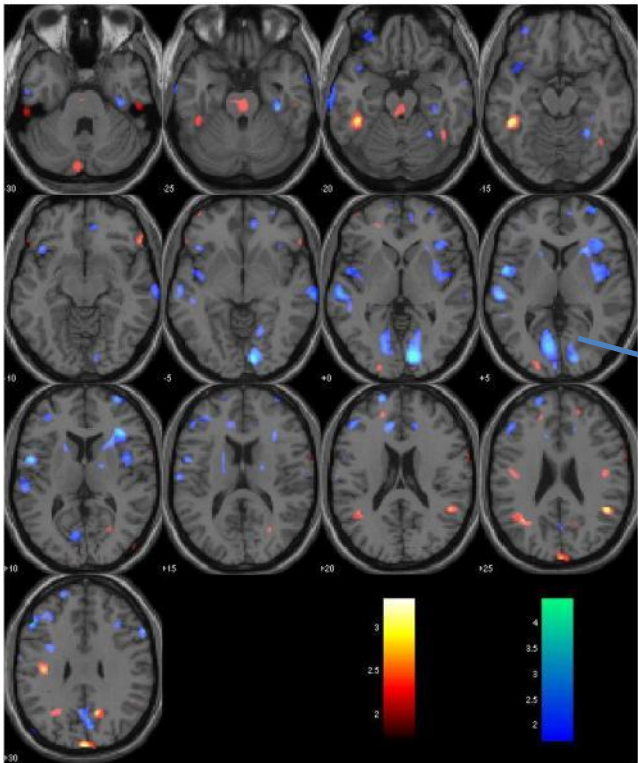


Frontal regions

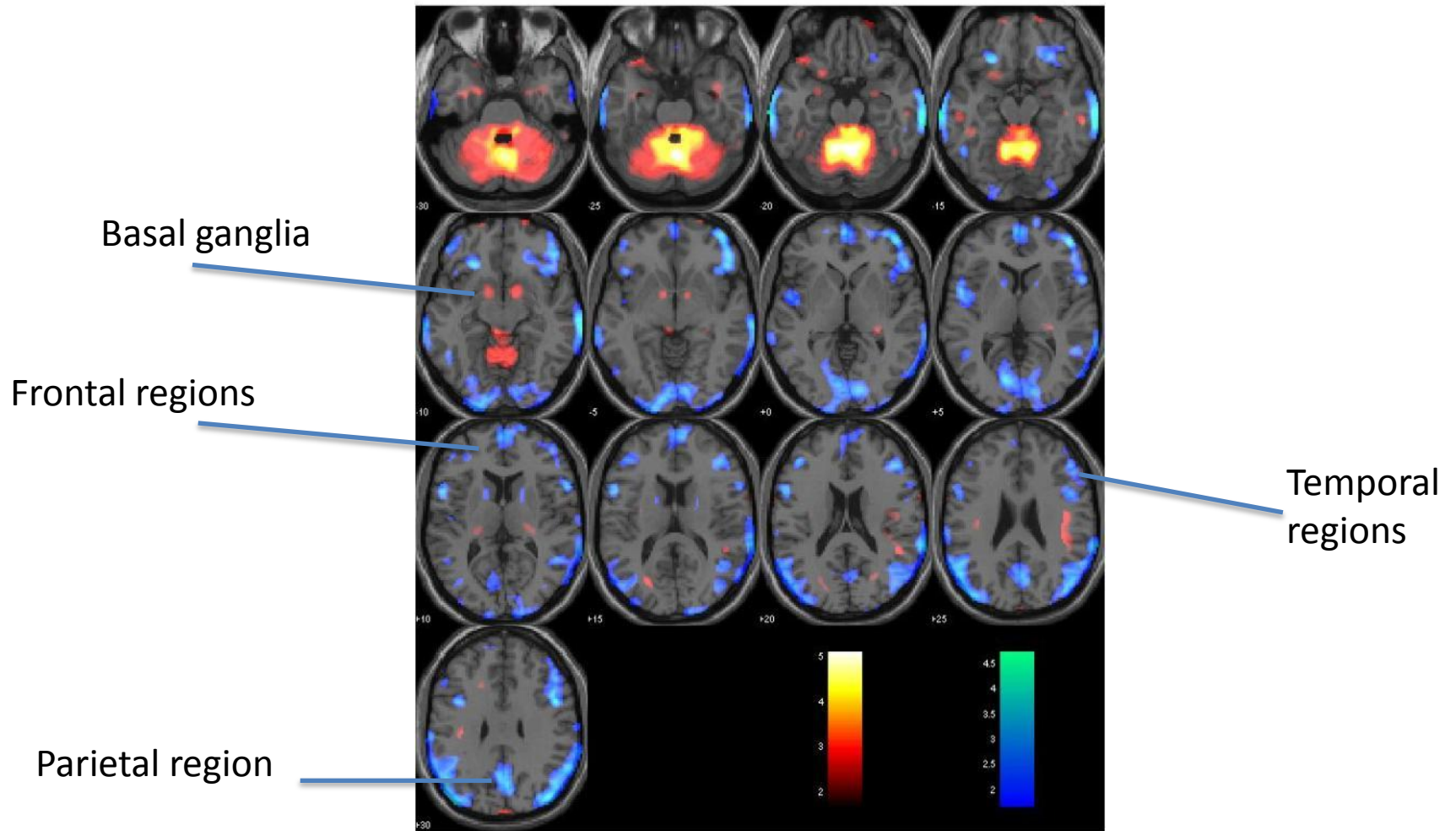
Temporal regions

Parietal region

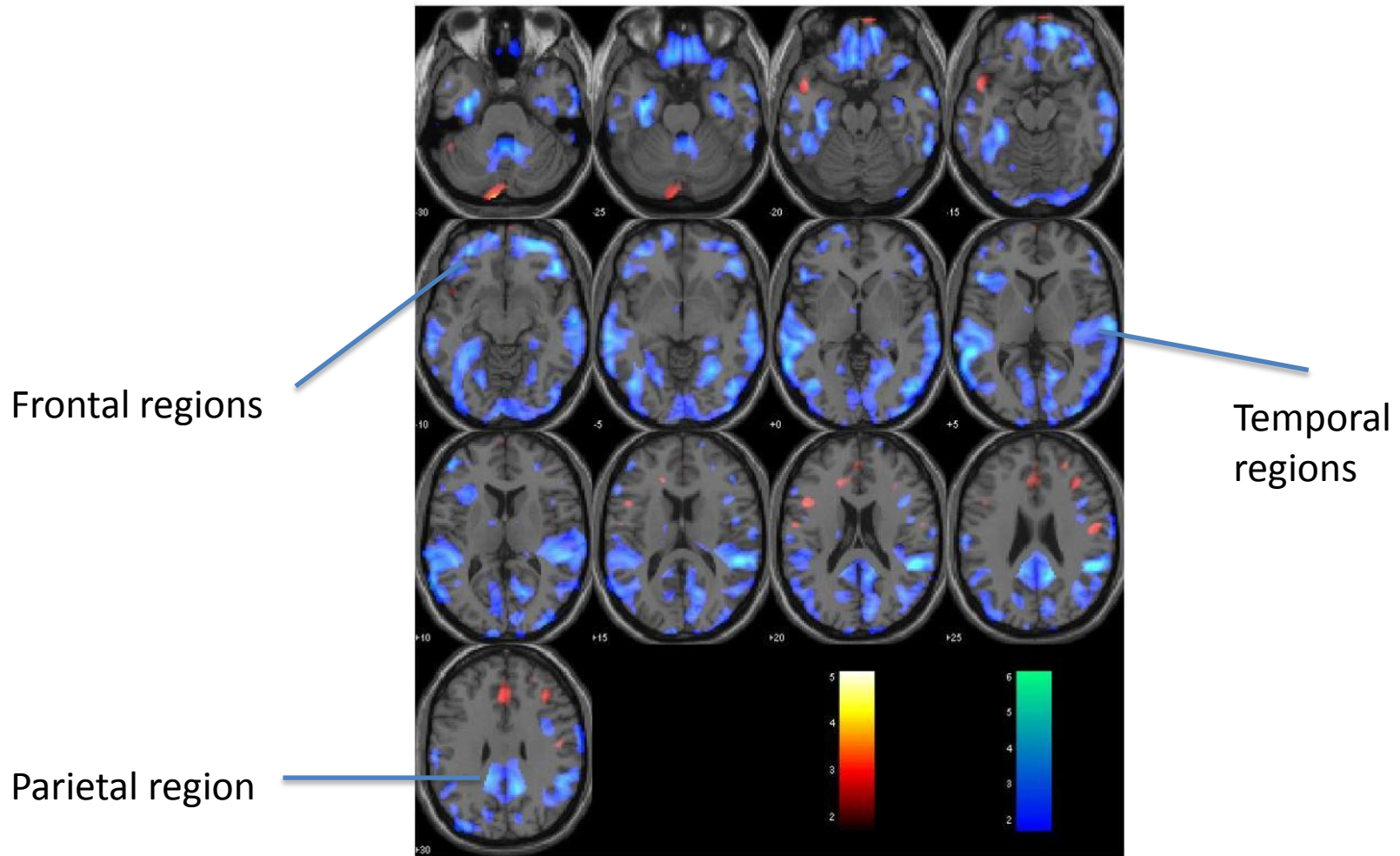
Occipital region



PD



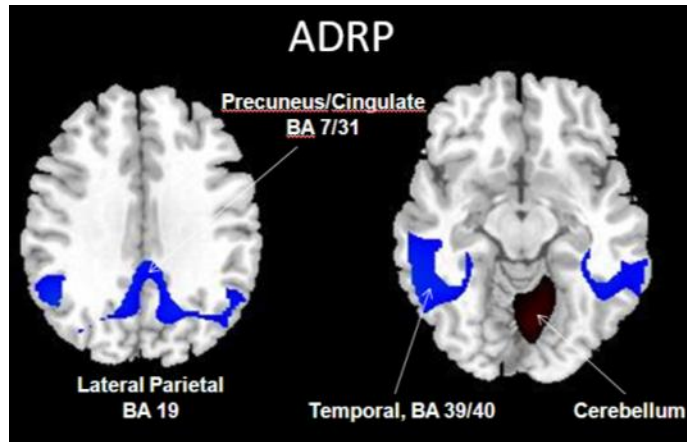
PD-MCI vs. PD



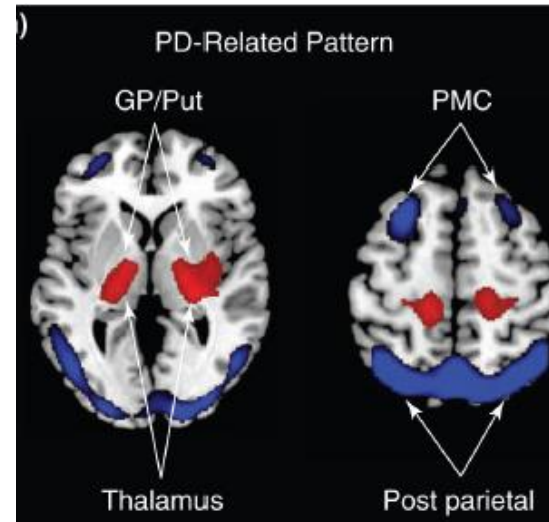
Conclusion – metabolic brain changes

- In MCI patients hypometabolism was pronounced in various cortical brain regions, more pronounced in MCI_{na} compared to MCI_a
- In PD-MCI (compared to PD) hypometabolic brain regions were identified in parietal, lateral temporal and in frontal brain cortex

METABOLIC NETWORK EXPRESSION



Nazem, Soc.for Neuroscience, 2014



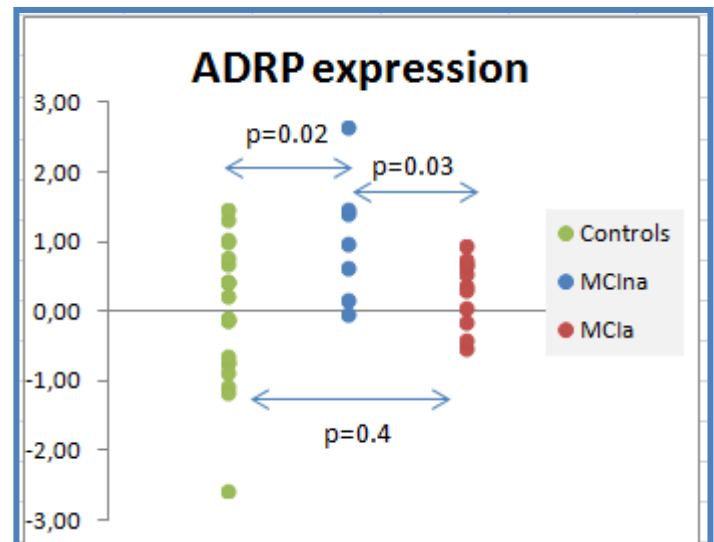
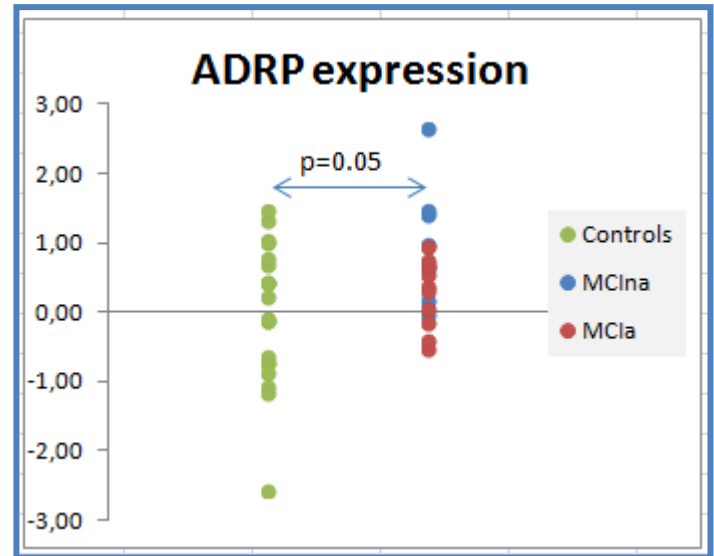
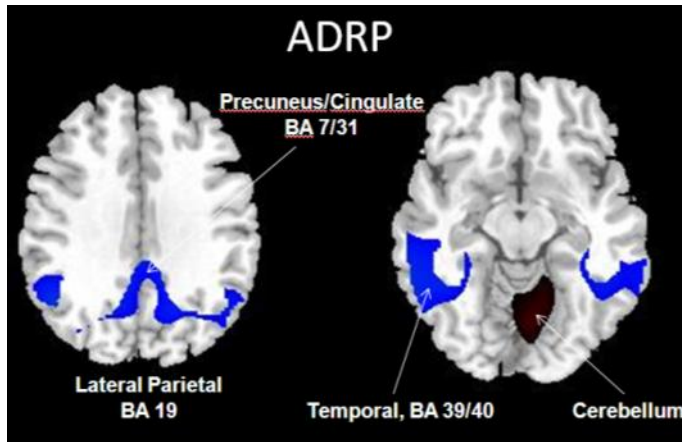
Eidelberg, Trends Neurosci. 2009

Alzheimer's Disease Related Pattern, Parkinson's Disease Related Pattern:
Characteristic metabolic brain networks ,
identified using principal component analysis

Reveal functional connections between disease affected regions,
sensitive to early subtle changes

ADRP expression in MCI

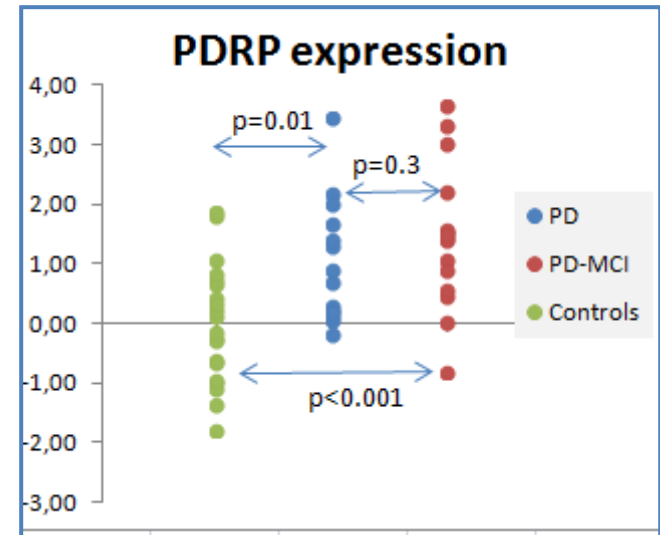
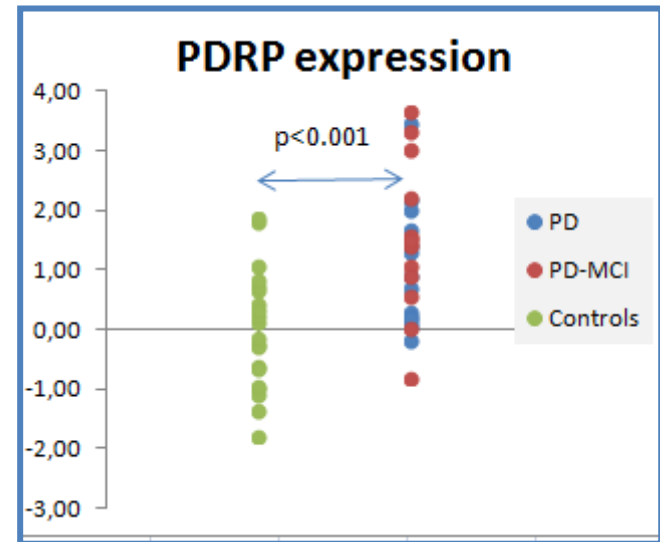
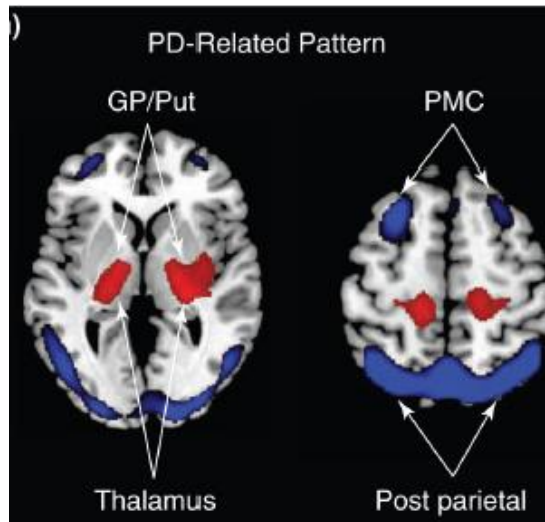
Alzheimer's Disease Related Pattern



	all MCI	MCIa	MCIb
ADRP expression	0.6 ± 0.8	0.3 ± 0.5	1.1 ± 0.9
p-value (NC)	0.05	0.4	0.02

PDRP expression in PD

Parkinson's Disease Related Pattern

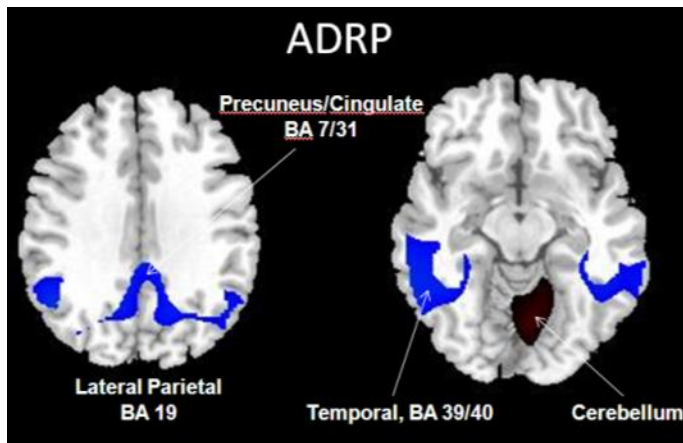


	all PD	PD	PD-MCI
PDRP expression	1.3 ± 1.1	1.0 ± 1.0	1.5 ± 1.2
p-value (NC)	< 0.001	0.01	< 0.001

Conclusion – metabolic networks expression

- Expressions of brain metabolic networks ADRP and PDRP allow differentiation between patients and controls
- ADRP and PDRP may be useful biomarkers of early AD and PD

CORRELATION BETWEEN METABOLIC AND CSF BIOMARKERS

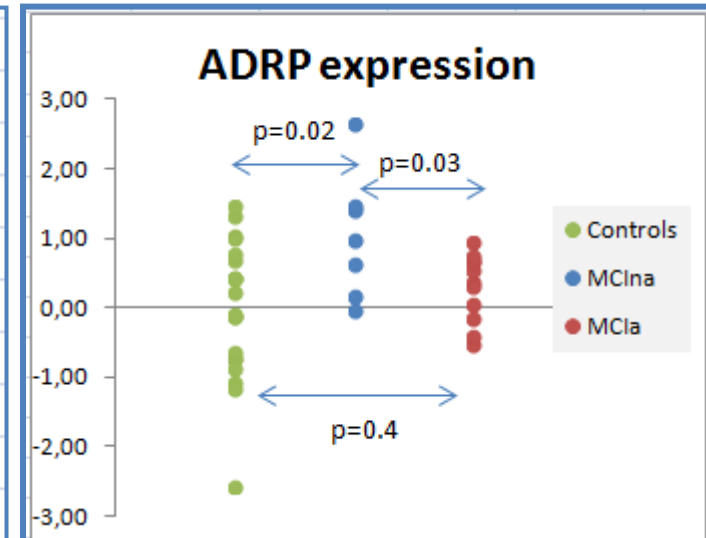
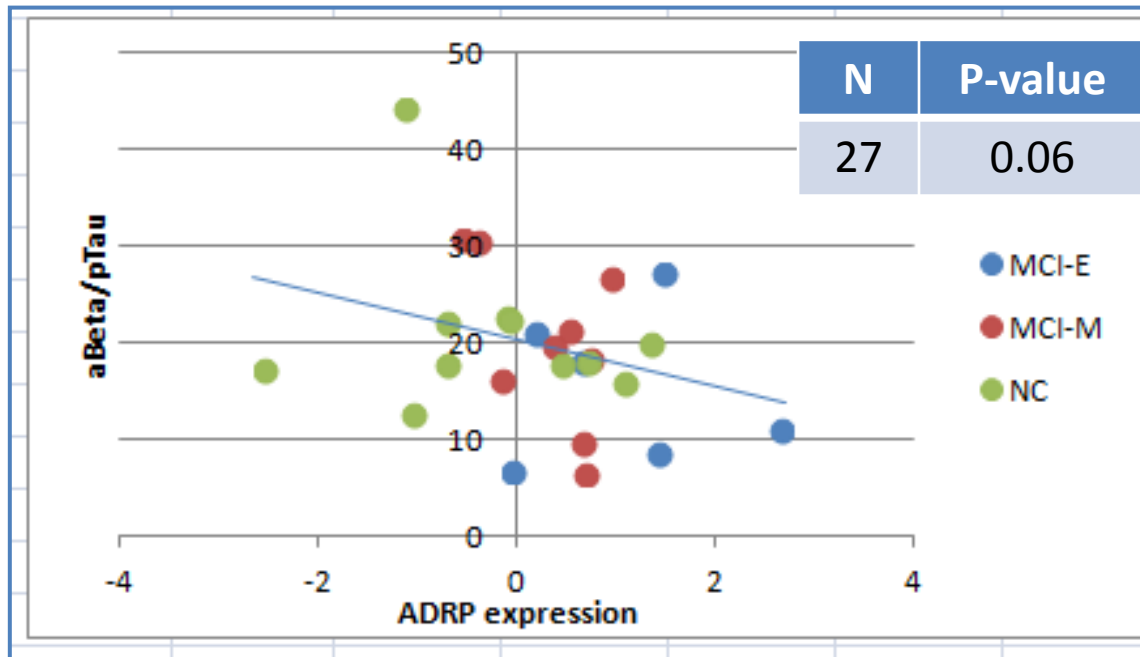


Alzheimer's Disease
Related Pattern

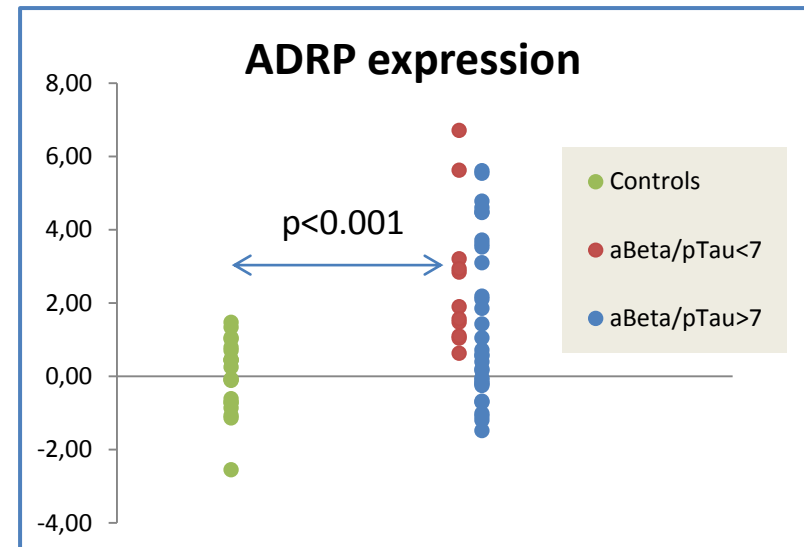
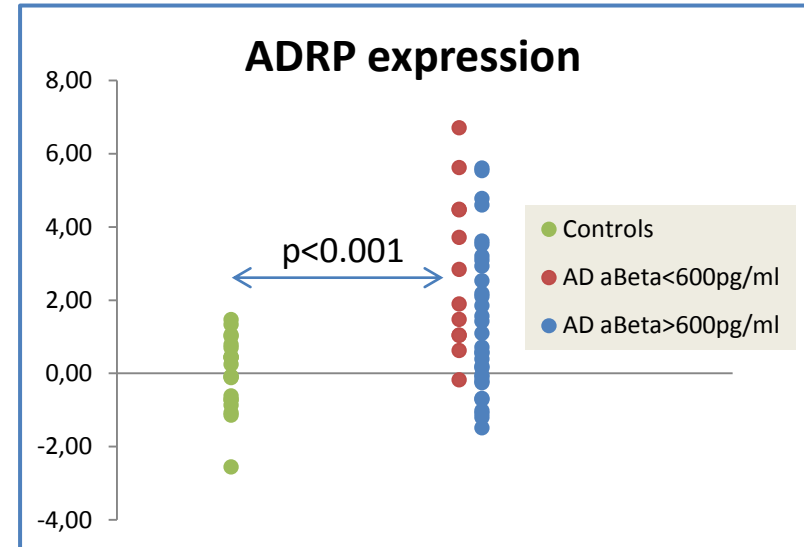
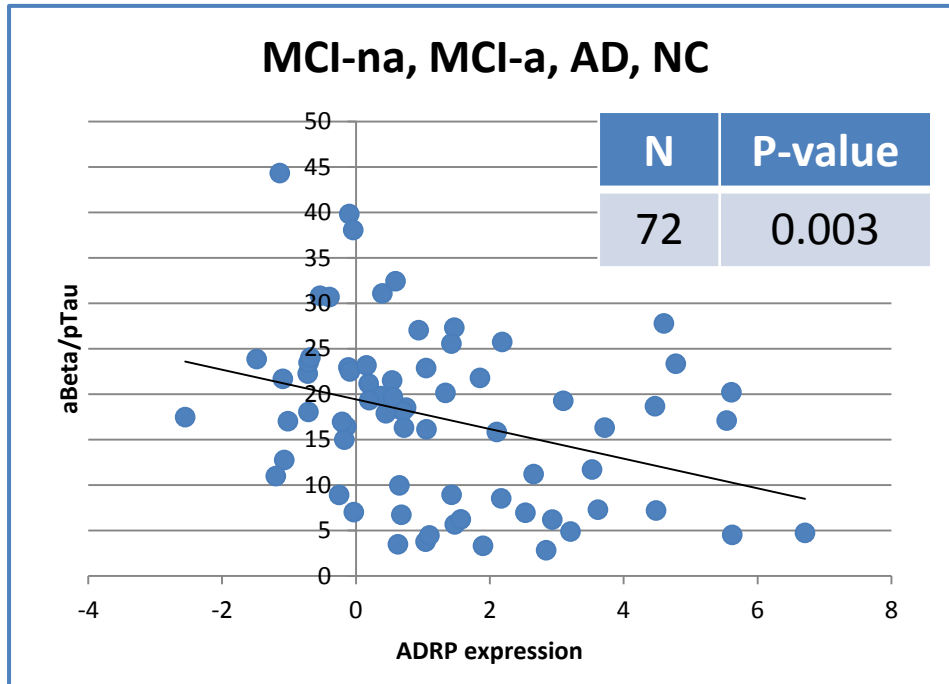


Low Amyloid Beta – amyloid accumulation
High Tau, pTau - neurodegeneration

ADRP expression correlation with CSF parameters



ADRP expression correlation with CSF parameters



AD subjects

N	Age	MMSE	MoCA
45	71 ± 9	24 ± 5	21 ± 4

Conclusion – ADRP and CSF

- The value of ADRP as a biomarker was confirmed with its correlation with CSF biomarkers for AD

Aknowledgments

Department of Nuclear Medicine, UMC:

Jensterle L, Grmek M

Department of Neurology, UMC:

Rot U, Emeršič A, Pirtošek Z, Trošt M

Feinstein Institute for Medical Research, Manhasset, NY:

Tang CC, Eidelberg D