

PRoNTo

Pattern Recognition for Neuroimaging Toolbox

Pascal2 event at EUCog III
Palma de Majorca
11 April, 2013

Jessica Schrouff,
Cyclotron Research Centre,
University of Liège, Belgium

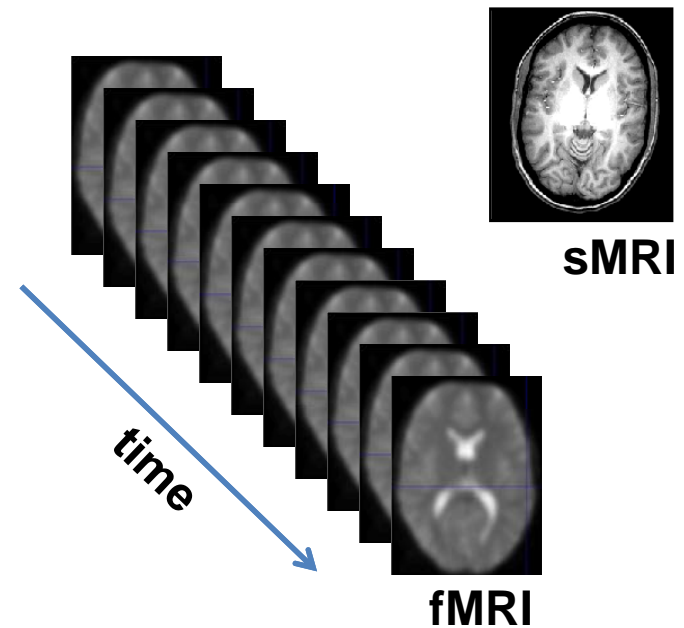
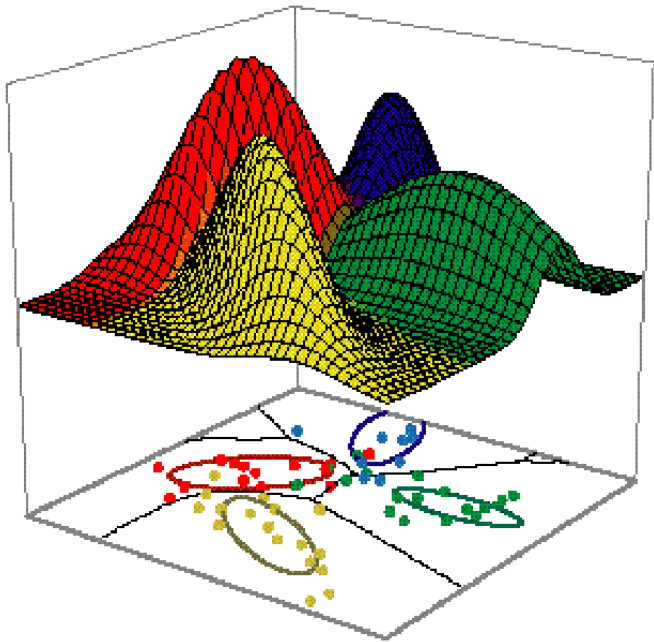


PRoNTo

Machine Learning
community

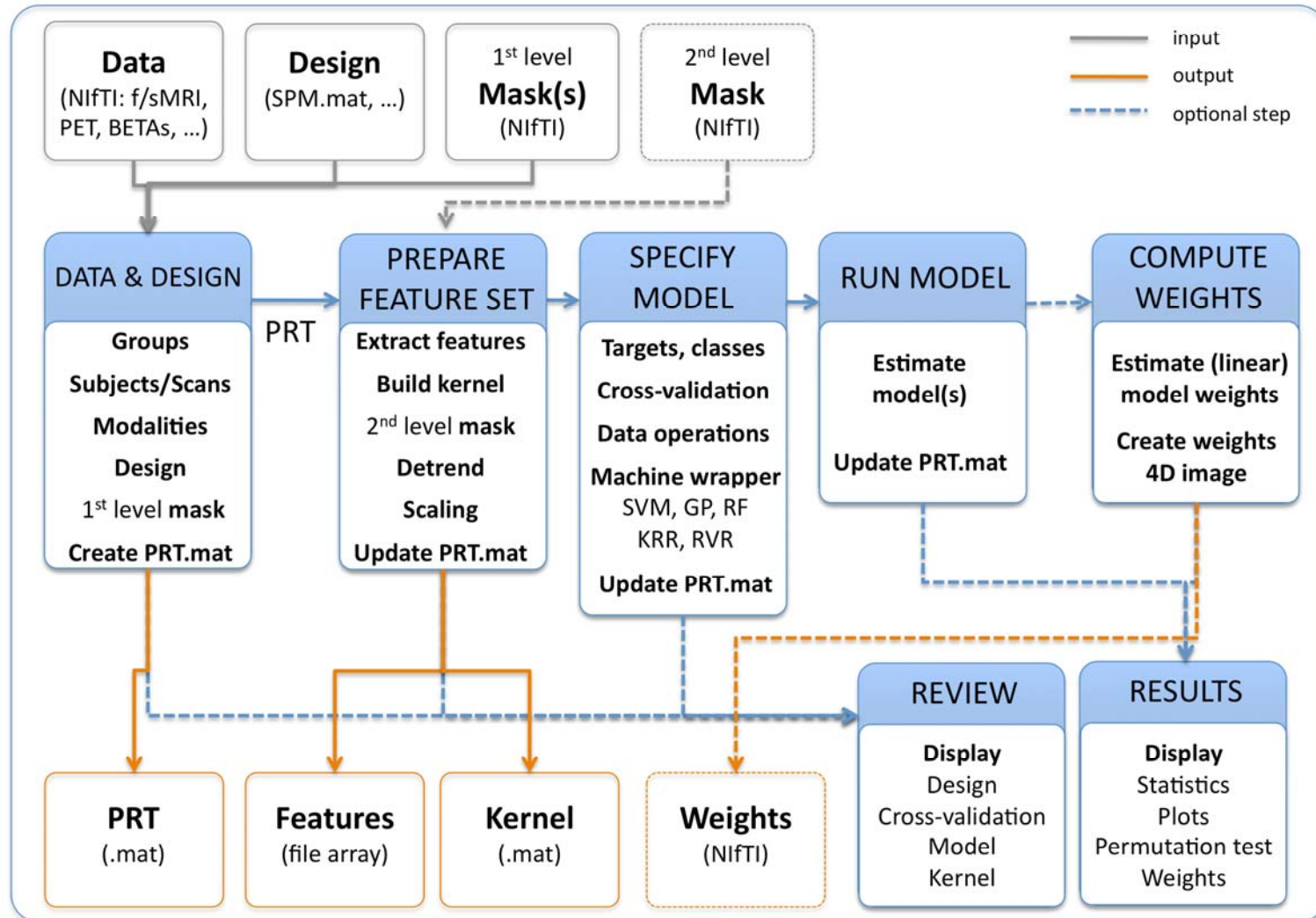


Neuroscience and
Clinical Neuroscience
communities



PRoNTo

PRoNTo FRAMEWORK



PRoNTo

User point of view

The image displays the PRoNTo software interface, which is designed for pattern recognition in neuroimaging data. The main window, titled "PRoNTo ::", features a "Pattern Recognition for Neuroimaging data Toolbox" with two columns of buttons: "Main steps" (Data & Design, Prepare feature set, Specify model, Run model, Compute weights) and "Review options" (Review data, Review kernel & CV, Display results, Batch, Credits).

The "PRoNTo :: Results" window shows a scatter plot of "fold" (y-axis, 1-5) versus "function value" (x-axis, -5 to 5). The plot includes data points for "Class 1" (marked with 'x') and "Class 2" (marked with 'o'). To the right of the plot is a "Model" section with dropdown menus for "Model" (set to "Model SVM"), "Fold" (set to "All folds / Average"), and "Plot" (set to "Predictions"). Below the plot are buttons for "Permutation test" and "repetitions".

The bottom section of the results window displays "Weights map" (three brain slices with a color scale from -5 to 5) and "Anatomical img" (three brain slices with a crosshair position set to "Origin" and coordinates in mm: 0.0 0.0 0.0). The intensity is shown as -4.87762e-06. Buttons for "Save", "Help", and "Quit" are at the bottom.

The "Batch Editor" window is overlaid on the right, showing a menu with options: "Data & Design", "Feature set/Kernel", "Specify model", "Run model", "Compute weights", and "Edit Defaults". The "Module List" is currently empty, showing "No Modules in B...". The bottom of the Batch Editor window displays "MATLAB Batch System" and "Matlabbatch User Interface".

PRoNTo

Developer point of view

Structure containing:

- Data/Kernel
- Labels
- Etc



Structure containing:

- Predictions
- Coefficients/Weights
- etc

- Function name (machine)
- Arguments

Machine Library
(classification and regression models)

